



Capability Statement



About Mascot

Relied upon since 1920.



Established in 1920 as an iron foundry in Sydney's inner suburb of Mascot, Mascot Engineering is the largest manufacturer of Glass Reinforced Concrete (GRC) products in the Southern Hemisphere.

Mascot Engineering remains Australian as well as family owned, and we are incredibly proud of our track record, the quality of our products and our enviable list of projects we've supplied.

In addition to our range of precast Glass Reinforced Concrete (Mascot GRC), we also manufacture and supply custom precast concrete, plastic, steel and iron products suitable for applications across plumbing & water management, electrical & telecommunications, as well as streetscape & landscaping.

Our 100 years of manufacturing in Australia, and our many satisfied customers who trust and rely on us, is what defines our past and our future.





People & Communities

Experience and expertise

Mascot Engineering has the depth of experience and the capacity to deliver. Every member of the Mascot Engineering team shares a commitment to quality and a commitment to our customers, and this is the foundation of our reputation.

We take genuine pride in our work and take our responsibilities seriously, understanding the importance of quality and reliability, as our products play their role as part of a larger project.

We place an emphasis on employing the right people so our customers can rely on a broad base of relevant industry knowledge. Our Mascot 4YOU team's decisions and actions are underpinned by industry leading customer service and technical knowledge ensuring we stay one step ahead. Across all areas of our business we foster a team-based culture that encourages co-operation and participation. We share our learning, knowledge and experience both internally and with our customers.

Our expertise and experience ensure that we can value-add for our customers through the innovations and new products that our team have delivered to the market, the technical support we provide, and the development of custom products.

We are proud that our approach means that we have many long-term members of our 'Pit Crew' and that we enjoy stable industrial relations and deliver consistently high product quality.

Our communities

From humble beginnings in the Sydney suburb of Mascot, to today with five locations across Australia, we're active in our local communities. Not only do we provide various employment opportunities around the country, but we endeavour to put back into our local economy as best we can.

Mascot Engineering will always seek to support local businesses in the procurement of both products and services. Our supplier relationships are long term and, in some cases, span three generations (just like us). As the only national manufacturer and supplier of Pits, Grates and Access Covers that remains Australian owned and run, we feel it's our responsibility.

Every member of the Mascot team shares a commitment to quality and a commitment to our customers. This is the foundation of our reputation.

Quality

Policy



Sourcing the highest grade materials from across the globe, we take care in every step of the manufacturing process, resulting in superior quality, Australian-manufactured product we're immensely proud of.

Mascot's objective is to provide products and service of the highest quality that are consistent and uniform for the Australian building industry. Mascot maintains an effective Quality Management System. Mascot's Quality System documentation amplifies this Policy Statement and provides the procedures and reporting system which ensures all quality requirements are maintained and controlled.

Mascot's Quality Statement is a firm commitment as to the safe operation of the Company and its implementation is fully supported by the Management and all employees.

A handwritten signature in black ink.

Nick Taylor
General Manager



Occupational Health and Safety Policy

Mascot Engineering acknowledges that the provision of a safe and healthy work environment for employees, contractors and visitors is not just a moral and legal responsibility but also a prerequisite for it to achieve its primary mission of manufacturing and supplying quality products.

Mascot Engineering has developed a Work Health & Safety policy with documented procedures and processes to ensure this commitment to protecting its human resources also extends to ensuring the Company's operations do not place the local community at risk of injury or property damage. Our grating and access covers are manufactured in a facility accredited to OHSAS 18001. Mascot Engineering hold all relevant insurance policies regarding public liability, cyber security, workers compensation and more.

Environment

Protecting the future

As a local family company in our third generation, we are committed to introducing manufacturing, storage and packing processes that reduce the impact on the environment. Through innovation and operational controls, we've taken steps to positively protect the environment and are conscious of reducing environmental impact across all of our activities. Recycling water in our manufacturing process, our 294 solar panels on our Smithfield plant and the reuse of waste paper are just some of the steps we've taken.

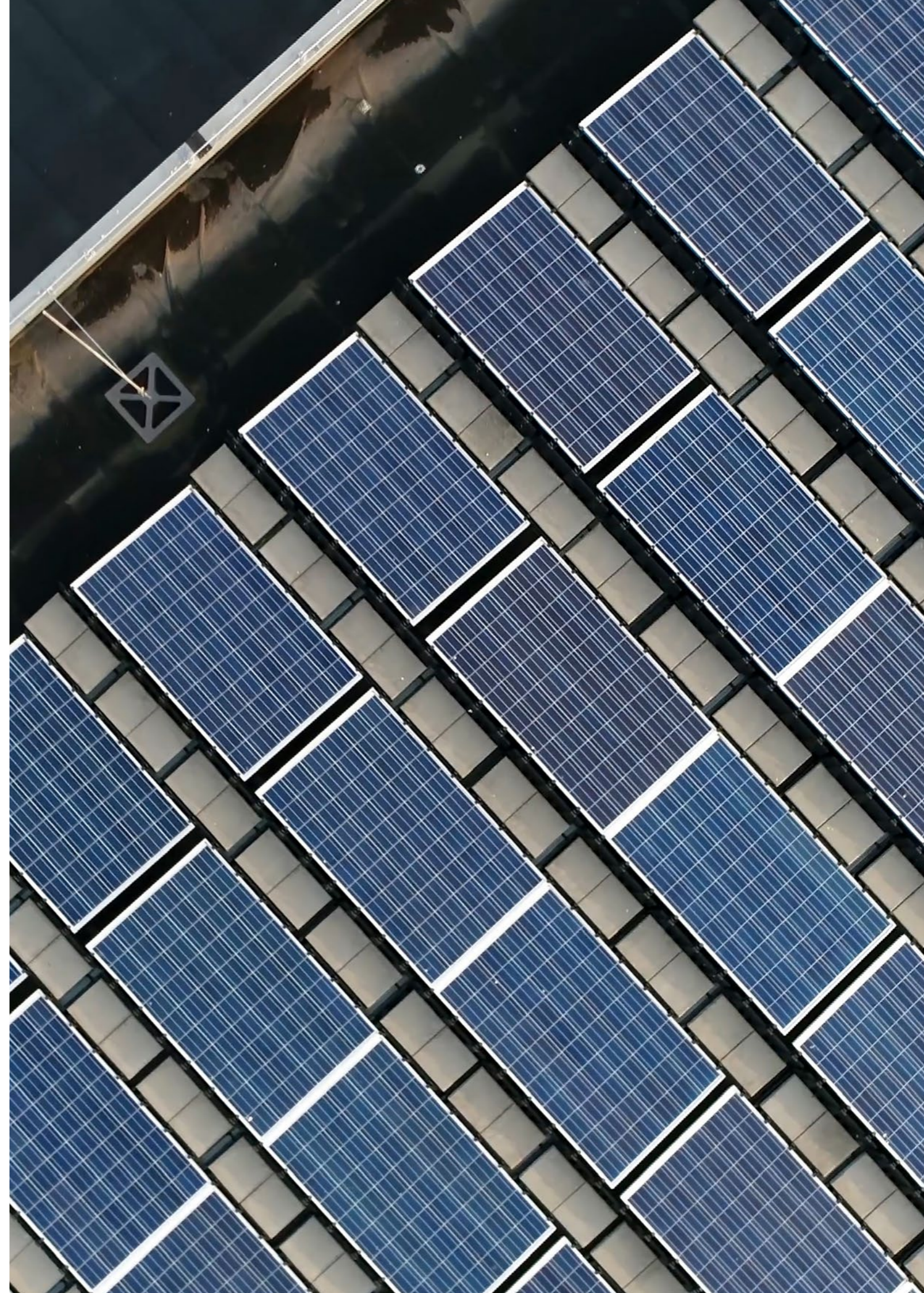
It's not just our processes – it's our product too

A joint study by the UK Government and Concrete Industry Alliance concluded that Glass Reinforced Concrete (GRC) as a material has a lower environmental impact (around 40% less) than similar products manufactured from other precast concrete materials. We also focus on the positive functional role that Mascot Engineering products play in the effective management and treatment of wastewater to protect the broader environment from harm.

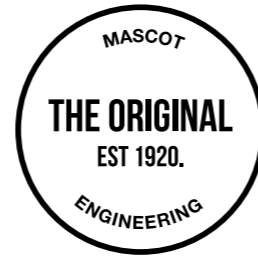
ISO 14001 – Third party certification

All Mascot Engineering castings are manufactured in an accredited ISO 14001 foundry. In fact, this was the first foundry in the world to adopt an effective Environmental Management System (EMS) and achieve third party accreditation. Mascot Engineering has strict quality controls across our manufacturing facilities and a rigorous quality assurance program to ensure that our products perform reliably and consistently.

We are immensely proud of being an Australian-owned manufacturer, and our proactive processes of reusing materials and water is just the beginning in our obligation to you and our future generations.



Mascot GRC: A History of Innovation



Mascot Engineering's products are manufactured from a range of the highest quality materials ensuring the finished product not only meets industry standards, but is extremely resilient and reliable.

The ability to innovate to meet the market's needs has been key to the success and longevity of Mascot Engineering, and integral in our continued expansion. As part of this innovation, Mascot Engineering introduced Glass Reinforced Concrete to the Australian construction market in the mid 1980s, originally pioneered for use in drainage applications due to its strength and resilience.

The lightweight nature of Glass Reinforced Concrete (1/10th the weight of steel reinforced concrete) very quickly made the material popular amongst Sydney's plumbers looking for a solution that was easy to work with on site, and strong enough for use in heavy duty applications.

GRC Manufacture

Mascot Glass Reinforced Concrete (Mascot GRC) products are made from a custom composite of concrete and alkali resistant glass fibre which provides structural reinforcement, eliminating the requirement for traditional steel frame reinforcement.

Mascot's unique manufacturing method ensures an even distribution of reinforcement throughout the product, improving durability and strength. This unique manufacturing process is what sets Mascot GRC apart from other GRC manufactured products. And is also why Mascot Engineering are the largest manufacturer of GRC in the southern hemisphere.

Benefits of Mascot GRC

- ✔ Engineered for strength
- ✔ Lightweight
- ✔ Cost effective to freight and install
- ✔ Chemical resistant
- ✔ Durable



Mechanical properties

Compressive strength The enclosure's wall/base is subject to compressive loads in use and needs to withstand specific loads.	80MPa typical
Flexural strength Affects site handling and when enclosure is installed in areas where encasement and soils are suspect.	24MPa
Tensile strength Generally only relevant to an enclosure's lid/cover.	20MPa

Thermal/Electrical properties

Water absorption The enclosure's wall/base is designed to keep moisture away from its contents where possible.	< 5%
Electrical resistivity The electrical insulation capability of an enclosure's materials.	1 x 10 ⁸ Ω/sq
Freeze thaw Inability to withstand freeze-thaw cycles causes surface spoiling and leads ultimately to an enclosure's failure.	Modulus of elasticity unchanged
Coefficient of expansion/contraction Excessive movement between enclosure's wall/base and encasement materials (usually concrete) creates unwanted stresses which may lead to failure.	10 x 10 ⁻⁶ deg C
Water vapour transmission WVT is a measure of water vapour flow through a material. Passage of water vapour may be critical in some instances.	1 x 10 ⁻⁴ gm/s. Mn

Surface properties

Surface burning Cable enclosures are often used around petrol stations, chemical processing and interior applications and may be subject to fire. They should be non-flammable and not give off fumes or smoke.	Non combustible. Ignitability: P Fire propagation: 0 Flame spread: Class 1 Fire resistance: 1 hour for 10mm thickness
Weathering The majority of cable enclosures are used in exterior applications. Ability to withstand adverse weather will ensure long service life (erosion, UV degradation, etc.).	UV Stable Good as H.S. Concrete
Chemical Resistance Cable enclosures may be subject to acidic or alkaline soils.	Excellent. Equivalent to 80MPa concrete

**MASCOT ENGINEERING IS
THE LARGEST MANUFACTURER
OF GRC PRODUCTS IN THE
SOUTHERN HEMISPHERE**



Mascot: In Numbers

1.7M

Kilograms of GRC precast product poured per year

1.2M

Kilograms of Access Covers and Grates supplied per year

22K

Pits sold per year

100

Number of years Mascot has been in operation

80T

The largest pit Mascot has produced

5

Warehouse locations across Australia

AUSTRALIA'S MOST RELIED-UPON
PIT, COVER, GRATE AND WASTE WATER
TREATMENT PRODUCTS.

TRUSTED BY THE TRADE SINCE 1920.





Scan to learn more about our products

The Mascot Range

Cable Pits



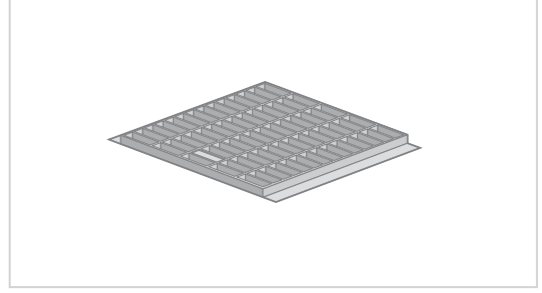
Drainage Pits



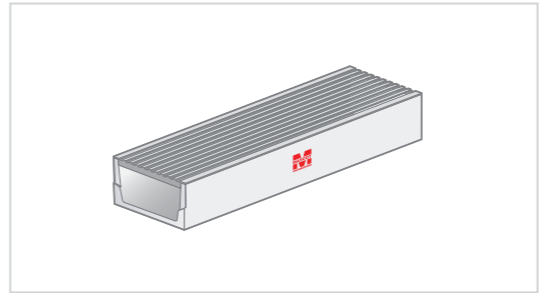
Access Covers



Grating



Channel Systems



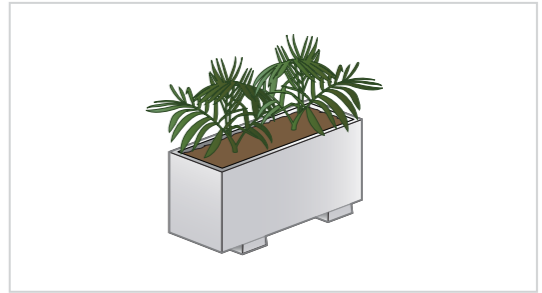
Trade Waste



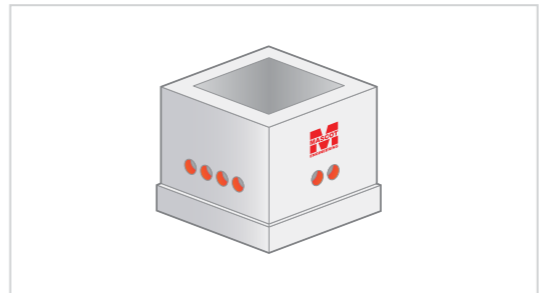
Streetscape



Planter Boxes



Custom Concrete



Coreworx Joint Bays



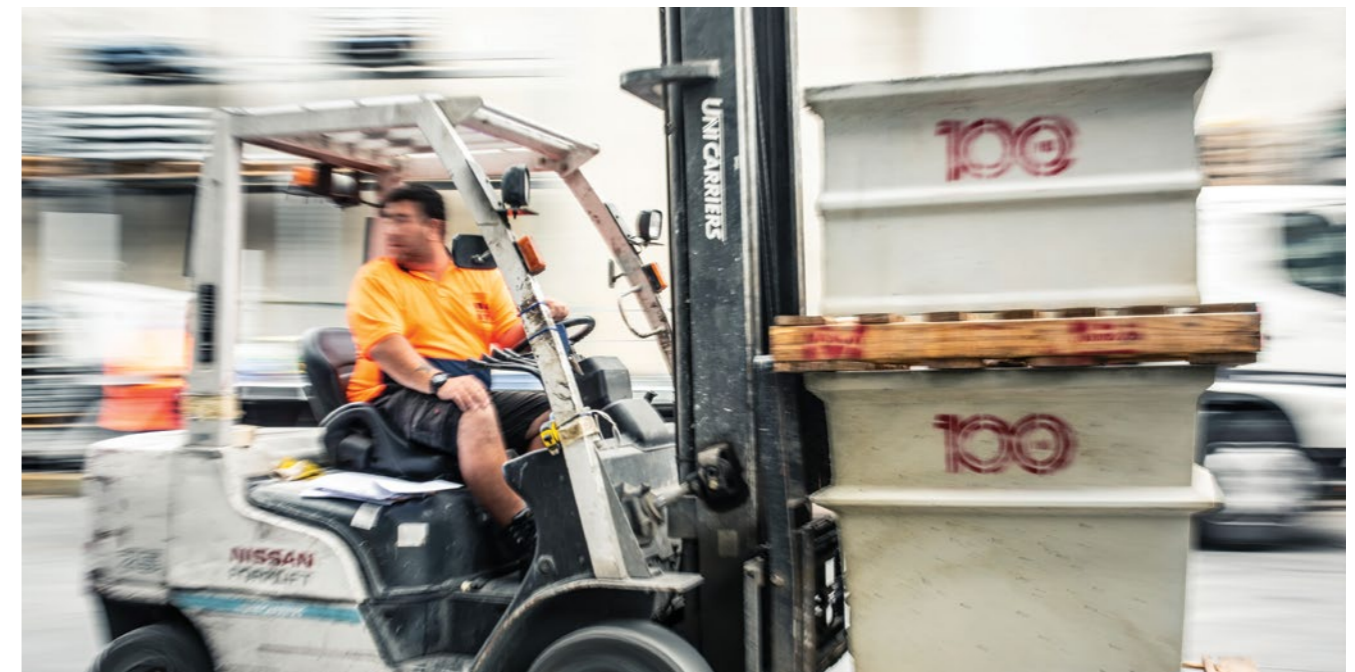
Product List

Cable Pits
GRC Cable Pits
Plastic Cable Pits
Custom Concrete
Cable Pit Accessories
Drainage Pits
GRC Drainage Pits
Custom Precast Drainage Pits
On-site Detention/Retention
Drainage Pit Accessories
Custom Concrete
Custom Precast Cable Pits
Coreworx Joint Bays
Link Pits
Fibre Pits
Custom Precast Drainage Pits
Encased Grates and Covers
Light Pole Bases
Precast Concrete Bollards
Joint Bay and Cable Pit Accessories
Cable Route Marking Posts
Coreworx
Coreworx Joint Bays
Link Pits
Fibre Pits
Joint Bay and Cable Pit Accessories
Access Covers
Concrete infill covers
Single part infill covers (gastight)
Two part infill covers (gastight)
Three part infill covers (gastight)
Multipart infill covers (gastight)
Class B
Class D
Class E
Class G
Trench Runs (Gastight)
Round Infill Covers
Concrete Encased Covers
Solid Top
Single Part
Two and Three Part
Multipart
Continuous Trench Run
Solid Top Circular Covers
Composite Covers

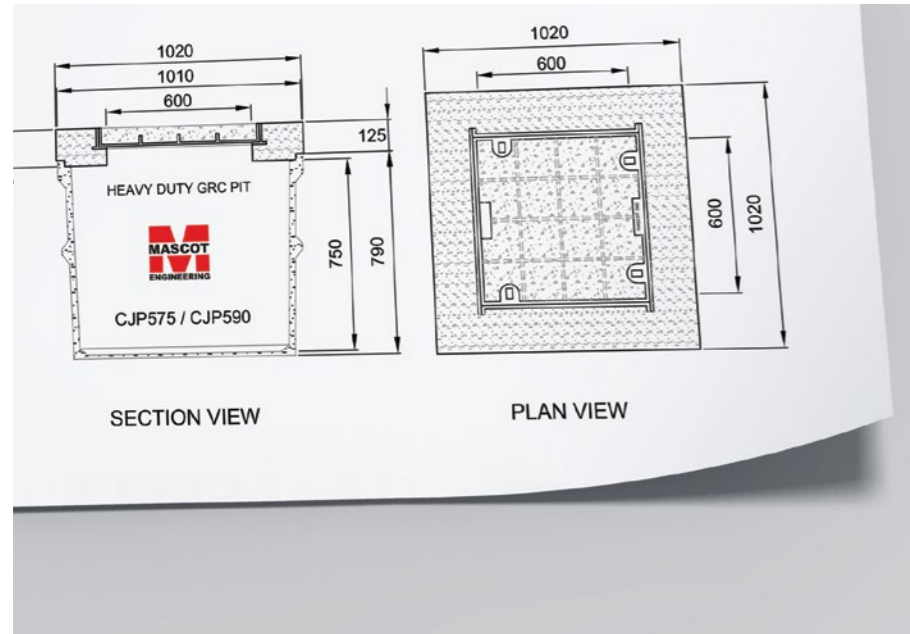
GMS Checkerplate
Drop-in
Boltdown
Padlockable
Plastic Pits
Custom GMS Checkerplate
Surface Fill Covers
Paver Infill Covers
Gastight
Non-Gastight
Two and Three Part
Multipart
Decorative Raised Edge Infill Covers
Continuous Trench Run
Concrete Encased
Covers to suit GRC Pits
GMS Checkerplate
Drop-in
Boltdown
Padlockable
Plastic Pits
Custom GMS Checkerplate
GRC Covers
Concrete Infill Covers
Solid Top Covers
Surface Fill Covers
Concrete Encased
Trade Waste Product Covers
Boltdown and Security Systems
Custom Concrete Encased Covers
Fire Rated System
Lifting Keys
Grating
Grates to suit GRC Pits
Drop-in GMS Grates
Drop-in Heelproof GMS Grates
GMS Grates and Frames
GMS Heelproof Grates and Frames
Concrete Encased Grates and Frames
Cast Iron Grates and Frames
Stainless Steel Heelproof Grates
Sump Grates and Frames
GMS Grates and Frames
GMS Heelproof Grates and Frames
Cast Iron Grates and Frames
WA Circular Grates and Frames
Concrete Encased Grates and Frames
Surcharge Grates and Frames
Stainless Steel Grating

Stainless Steel Shower Grates
Stainless Steel Heelproof Grates
Trench Grating
GMS Trench Grates and Frames
GMS Heelproof Trench Grates and Frames
Cast Iron Trench Grates and Frames
Stainless Steel Grating
Stainless Steel Shower Grates
Stainless Steel Heelproof Grates
DriveDrain
4All by Mufle
Kerb Entry Grates and Frames
Custom Grating
Custom Encased Grates and Frames
Channel Systems
DriveDrain
GMS Trench Grates and Frames
GMS Heelproof Trench Grates and Frames
Cast Iron Trench Grates and Frames
Stainless Steel Grating
Trade Waste
Grease Traps
CFI Oil Separators
Cooling Pits
Averaging/Mixing/Dilution/Cooling Pits

Dry Arrestor Pits
Dilution Pits
General Purpose Pits
Neutralising Tanks
Triple Interceptors
Detention/Retention Tanks
Solids Settlement Tanks
Silt Arrestors
Floor Silt Arrestors
Floor Basket Arrestors
Under Sink Plaster Traps
Stainless Steel Basket Arrestors
Streetscape
Bollards
Tree Grates
Planter Boxes



Mascot 4YOU



Mascot 4YOU is about real support when you need it. We are an office-based sales and support team who are available to take care of any product, pricing or technical enquiry you might have, and are especially valuable at times when your sales representative is unavailable.

This team has been established so that you have access to the information you need at the time you need it.

Mascot 4YOU are equipped to help you with:

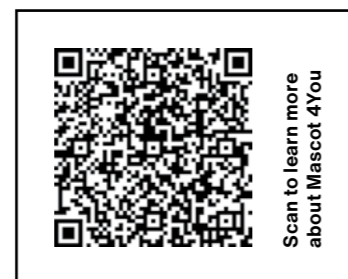
- ✔ Technical Support
- ✔ Project Estimating
- ✔ Installation Assistance
- ✔ PDF & DWG Drawings
- ✔ Product Selection
- ✔ Product Availability

Contacting Mascot 4YOU is easy

1300 885 295

sales@mascoteng.com.au

Australia-wide sales enquiries
Lines open 8am to 5pm, Mon to Fri



**AN EXPERIENCED AND DEDICATED
TEAM OF PROFESSIONALS,
WORKING 4YOU**



EVERY MEMBER OF THE
MASCOT ENGINEERING TEAM SHARES
A COMMITMENT TO QUALITY AND
TO OUR CUSTOMERS



Our Projects

“We believe that in our 100 years, we’ve helped build Australia. We remain Australian and family owned, and we are incredibly proud of the quality of our products, the diversity of the projects we supply, and our many satisfied customers who trust and rely on us.”

Nick Taylor

General Manager, Mascot Engineering



Civil and Infrastructure

Thompson Power Station, VIC
Parliament House, ACT
Wodonga Council, VIC
Hurstbridge Rail Upgrade, VIC
Enfield Train Stabling Yards, NSW
Bringelly Road Upgrade, NSW
Greta Train Stabling Yards, NSW
Tumbalong Park Darling Harbour, NSW
Sydney Central Station, NSW
Cronulla Rail Duplication, NSW
Botanic Gardens Sydney, NSW
DTRS Rail Upgrade Sydney Wide, NSW
Potato Point Sewerage Scheme, NSW
Taree Rail Upgrade, NSW
Leppington Stabling Yard – SW Rail Link, NSW
Karratha Waste Water Treatment Plant, WA
Rio Tinto Tom Price Waste Water Upgrade, WA
South Headland Waste Water Treatment Plant, WA
Port Botany Container Terminals, NSW
Southern Sydney Freight Line, NSW
Energex Facility, QLD
Sherwood Bus Depot, QLD
Goulburn Station, NSW
Horesearm Creek Bridge, NSW
Metro Petroleum Kearsley, NSW
Kooragang Island Newcastle – Port Upgrade, NSW
Leppington Substation, NSW
Bourke Water Treatment Plant, NSW
Young Sewerage Treatment Plant, NSW
South Hedland Water Treatment Plant, WA
Port Botany Terminal 3 Stage 1, NSW
Port Botany Patrick Terminal Upgrade, NSW
Bathurst Water Filtration Plant, NSW
Water Authorities – Nationwide
Sugarloaf Reservoir, VIC
Greenvale Reservoir, VIC
Cardinia Reservoir, VIC
Dampier Salt Waste Water Upgrade, WA
Crown St, Surry Hills Upgrade, NSW
Glebe Point Road, Glebe Upgrade, NSW
K2RQ Rail Expansion Sydney, NSW
Kehltenham Station, VIC
Solomon Islands Port Authority
Mittagong Railway Station, NSW
Olympic Dam, SA
Fairy Meadow Train Station, NSW
Sydenham Station, NSW
Forrestfield Airport Link, WA
Redcliffe Railway Station, WA
Brambles Container Yard, WA
Cross River Rail, QLD
Capricornia Correctional Centre, QLD
Grafton Correctional Facility, NSW



Utilities

Transgrid’s Powering Sydney’s Future (PSF), NSW
Wonthaggi Desalination Plant, VIC
Werribee Sewage Treatment Plant, VIC
Ausgrid Rozelle Substation Upgrade, NSW
Karratha Waste Water Treatment Plant, WA
South Headland Waste Water Treatment Plant, WA
Energex Facility, QLD
Leppington Substation, NSW
Molongio Valley Subdivision, ACT
Young Sewerage Treatment Plant, NSW
Mascot Substation Project, NSW
South Hedland Water Treatment Plant, WA
Bathurst Water Filtration Plant, NSW
Sugarloaf Reservoir, VIC
Greenvale Reservoir, VIC
Cardinia Reservoir, VIC
Dampier Salt Waste Water upgrade WA
TX Australia Brookvale, NSW
St Marys Substation, NSW



Education and Research

Sydney University, NSW
ANU – Birch Building, ACT
Playford College, SA
Emmaus Catholic School, SA
The Roundhouse UNSW, NSW
Croydon Public School, NSW
St George Christian School, NSW
Lalor East Primary School, VIC
Whyalla Secondary College, SA
University of New South Wales, NSW
Tropical North Learning Academy, QLD
Kapunda High School, SA
University of Technology, NSW
Derby TAFE College, WA
John Forest Secondary College, WA
Mount Lawley High School STEM, WA
Ballarat Clarendon College, VIC
Marrickville West Public School, NSW
Inner Sydney Montessori School, NSW
Primary & Secondary Schools
Western Sydney University, NSW
Inner City College Subiaco, WA
Marsden Park Public School, NSW
Butler College, WA
University of WA
Curtin University, WA
Various TAFE colleges
Aspley State High School, QLD
Nyngan Public School, NSW
Master Plumber NSW College of Excellence, NSW

Northside Grammar School, WA
Dapto Public School, NSW
Australian Nuclear Science & Technology Organisation (ANSTO), NSW
School Canteens
Banksia Grove SHS, WA
Imagination Garden Childcare, Geelong, VIC
Australian Federal Police Forensic Facility, ACT
ANSTO Facility Upgrade, NSW
Murray Bridge High School, VIC
Macquarie University, NSW
Fairvale High School, NSW
Scotch College Hawthorn, VIC
UNSW Roundhouse, NSW
Rosebank College, NSW
Goodna Special School, QLD
Marrickville West Public School, NSW
Croydon Public School, NSW
Redlands Special School, QLD
Langford Islamic College, WA
Brisbane Girls Grammar, QLD
Kalamunda High School, WA
Yancheop Secondary College, WA
St Joseph Secondary School, WA
Lake Joondalup Baptist College, WA
St Teresa Catholic College, WA
Yancheop Lagoon Primary School, WA
Edith Cowan University Science Building, WA
Banksia Grove East Primary School, WA
Curtin University DAP, WA
St James School, Osborne Park, WA
Hammond Park High School, WA
Bega TAFE Campus, NSW



Health

Blacktown Hospital Upgrade, NSW
Westmead Hospital Upgrade, NSW
Campbelltown Hospital Upgrade, NSW
Dubbo Base Hospital Upgrade, NSW
Maitland Hospital, NSW
Coolibah Aged Care Mandurah, WA
Sunshine Hospital, VIC
Brookvale Hospital Upgrade, NSW
Dubbo Hospital, NSW
Kempsey Hospital, NSW
Hornsby Hospital, NSW
Carynia Nursing Home, North Queensland, QLD
Sunshine Hospital, VIC
Canberra Hospital, ACT
Wyong Hospital, NSW



Residential

Department of Housing Waterloo, NSW
Residential Developments
West Village Apartments Parramatta, NSW
ANEW Apartments Rockdale, NSW
UWS Milperra Campus, NSW
Eden East Apartments Floreat, WA
Residential and Industrial Subdivisions
Harold Park by MIRVAC, Glebe, NSW
Waterline Apartments Cronulla, NSW
St Brigids Green – Maroubra NSW



Exhibition

Sydney Exhibition Centre, NSW
International Convention Centre Sydney, NSW
Sydney Powerhouse Museum, NSW
Royal Exhibition Building, Melbourne, VIC



Commercial and Industrial

TradeCoast Office Park, Brisbane, QLD
HomeMaker Centre, Cairns, QLD
Oakdale Industrial Estate, NSW
Master Plumbers & Gasfitters Association WA
Commercial and Mixed Use Developments
Industrial Developments
Moorebank Units Relocation, NSW

Ferrari Maserati Sydney, NSW
BP Eastlink Service Stations, VIC
BP Geelong Freeway Service Stations, VIC
BP Service Centres
Shell Service Stations
Star Car Washs
Crystal Car Washs
Audi Centre Five Dock, NSW
Asahi, VIC
Storage King Goulburn, NSW
Bunnings Albany, WA
CSBP Kwinana Plant, WA
Maddington Central Shopping Centre, WA
Eaton Fair Shopping Centre, WA
The Seasonal Brewing Co. Maylands, WA
Swagman Roundhouse Mount Magnet, WA
Bunnings Cairns, QLD
Coles Distribution Centre: Project Broccoli, QLD



Hospitality and Tourism

RSL Clubs
City Beach Surf Lifesaving Club, WA
Camden Valley Inn, NSW
Leederville Hotel, WA
Sydney Central Station, NSW
Riverside Hotel Southbank, QLD
Sunset Precinct Dalkeith, WA
Yagan Square Perth City, WA
Centenary Square, Parramatta, NSW
Sydney Exhibition Centre, NSW
Barangaroo Development, Sydney, NSW
International Convention Centre Sydney, NSW
Sydney Powerhouse Museum, NSW
Darling Harbour, Sydney, NSW
Circular Quay Foreshore, NSW
Royal Exhibition Building, Melbourne, VIC
Manly Sea Life Sanctuary, NSW
Sydney Opera House, NSW
Wet N Wild Sydney, NSW
Busselton Brewery, WA



Defence

HMAS Bandiana, VIC
HMAS Penguin, Sydney, NSW
HMAS Puckapunyal, VIC
HMAS Harman, ACT
HMAS Randwick, NSW
HMAS Richmond, NSW
HMAS Williamtown, NSW
HMAS Garden Island, NSW
HMAS Victoria Barracks Sydney, NSW
Randwick Barracks Building 310, NSW
Garden Island Building 328, NSW
HMAS Watson Building 77, NSW
Holsworthy Army Barracks Defence Transport & Logistics Facility Upgrade, NSW
RAAF Richmond, NSW
HMAS Penguin, Centre for Mental Health, NSW
HMAS Albatross HM-60R Facility, NSW
Swan Island Army Base - Queenscliff, VIC
Single Leap 2 Defence Accommodation, ACT
Department of Defence Housing Projects
RAAF Gin Gin, WA
Counter Terrorism Centre



Retail and Catering

Lakeside Joondalup Shopping Centre, WA
Eaton Fair Shopping Centre Bunbury, WA
Cranbourne Officeworks, VIC
Cockburn Shopping Centre, WA
Carouseil Shopping Centre, WA
McDonalds Restaurants
KFC Stores
Red Rooster Stores
Hungry Jacks Restaurants
Rouse Hill Shopping Centre, NSW
Woolworths Newman, WA
Westfield Shopping Centres
Bunnings Hardware Stores

Masters Hardware Stores
Woolworths Stores
McDonalds Park, Wagga Wagga
K-Mart Distribution Centre
Coles Supermarkets
Crust Pizza Outlets
Oporto Outlets
Nando’s Outlets
Crown Street Mall Wollongong Upgrade, NSW
Crown Street Mall Surry Hills Upgrade, NSW
HomeMaker Centre, Cairns, QLD
Trenddale Tavern, WA
Centro Shopping Centres
Canteens
Barangaroo Development, Sydney, NSW
Woolloomooloo Wharf Development, NSW
Darling Harbour, Sydney, NSW
Crown St, Surry Hills Upgrade, NSW
Glebe Point Road, Glebe Upgrade, NSW
Liberty Fuel, Dongara, WA
Metronode Unanderra, NSW
Circular Quay Foreshore, NSW
Seven Eleven Stores
Pizza Hut Outlets
Rasmussen Shopping Centre, QLD
Cranbourne West Shopping Centre, VIC



Mining

Rio Tinto Tom Price Waste Water Upgrade, WA
Dendrobium Mine – South32, NSW
Rio Tinto Tom Price Mine Pilbara, WA
Rio Tinto – Robe Valley, WA
Southern Cross Mines, Moranbah Mine, QLD
Boggabri Mine, NSW
Cadia Gold Mine, NSW
Liebherr Facility, Mt Thorley Project, NSW



Sport and Leisure

Bentleigh East Swimming Centre, VIC
Pymble Golf Club, NSW
Narellan Sports Hub, NSW
Sydney Football Stadium, NSW
Adelaide Oval, SA
Concord Golf Club, NSW
City Beach Surf Lifesaving Club, WA
Carrara Stadium, QLD
Fraser Park Rockhampton Lighting, QLD
City Beach Surf Lifesaving Development, WA
Royal Randwick Racecourse, NSW
Pakenham Race Course Relocation, VIC
Warwick Farm Racecourse, NSW



Community

RSL Clubs
City Beach Surf Lifesaving Club, WA
Department of Housing Waterloo, NSW
Botanic Gardens Sydney, NSW
Cirillo Reserve Middleton Grange, NSW
Paine Reserve Newport, VIC
Rouse Hill Anglican College, NSW
The Rocks Streetscape, NSW
Galvin Park Reserve, VIC
Lady Macquarie’s Chair Streetscape, NSW
Narellan Sports Hub, NSW
Peregrine Reserve Rowville, VIC
Art Gallery NSW Streetscape, NSW
St Mary’s Cathedral, NSW
Scarborough Beach Park Redcliffe, QLD
Bentleigh East Swimming Centre, VIC
Residential Developments
Fraser Park Rockhampton Lighting, QLD
Sunset Precinct Dalkeith, WA
Tumbalong Park Darling Harbour, NSW
Anglicare SA Elizabeth East Aged Care, SA
MRRC – Silverwater Jail Upgrade, NSW
Carrara Stadium, QLD
Thomas Oval Complex Kwinana, WA
Notts Avenue Bondi Streetscape, NSW
Crown Street Mall Wollongong Upgrade, NSW

Crown Street Mall Surry Hills Upgrade, NSW
Moore Park Stadium Redevelopment, NSW
Yagan Square Perth City, WA
City Beach Surf Lifesaving Development, WA
Royal Randwick Racecourse, NSW
Centenary Square, Parramatta, NSW
Sydney Exhibition Centre, NSW
Local Councils – Nationwide
Harold Park by MIRVAC, NSW
Barangaroo Development, Sydney, NSW
St Brigids Green – Maroubra, NSW
International Convention Centre Sydney, NSW
Pakenham Race Course Relocation, VIC
Sydney Powerhouse Museum, NSW
Darling Harbour, Sydney, NSW
Crown St, Surry Hills Upgrade, NSW
Glebe Point Road, Glebe Upgrade, NSW
Metronode Unanderra, NSW
Circular Quay Foreshore, NSW
Royal Exhibition Building, Melbourne, VIC
National Sports Centre, Canberra, ACT
Manly Sea Life Sanctuary, NSW
ANZ Stadium Artificial Turf Warm Up Arena, NSW



Transport

Westall Rail, VIC
Nowergup Train Depot, WA
Faulconbridge Station Upgrade, NSW
Merinda Park Station, VIC
Sky Rail, Melbourne, VIC
Regional Rail Link, VIC
Metro Rail, VIC
Kingsgrove to Revesby Rail (K2RQ), NSW
Newport Rail Sidings, NSW
Parramatta Light Rail, NSW
Craigieburn Station, VIC
Flinders Link Rail Project, SA
Hurstbridge Rail Upgrade, VIC
Enfield Train Stabling Yards, NSW
Greta Train Stabling Yards, NSW
Sydney Central Station, NSW
Cronulla Rail Duplication, NSW
Greta Rail Facility, NSW
DTRS Rail Upgrade Sydney Wide, NSW
Taree Rail Upgrade, NSW
Mittagong Railway Station, NSW
Sydney Airport Apron Upgrade, NSW
Leppington Stabling Yard, SW Rail Link, NSW
Port Botany Container Terminals, NSW
Southern Sydney Freight Line, NSW
Sherwood Bus Depot, QLD
Kooragang Island Newcastle, Port Upgrade, NSW
Sydney Airport, Qantas Hanger Upgrade, NSW
NCIG Newcastle, Port of Newcastle Upgrade, NSW
Sydney Freight Terminal, NSW
Bankstown Airport, NSW
Melbourne Airport Fire Brigade Training Centre, VIC
Ballarat Airport, VIC
Avalon Airport, VIC
Melbourne Airport Air Services, VIC
Melbourne Airport T4 Car Park, VIC
Mackay Airport, QLD
Gladstone Airport, QLD
Perth Airport, WA



IT and Telecommunications

TX Australia Brookvale, NSW
AIRTRUNK Lane Cove Data Centre, NSW
NextIDC
IC5 Canberra Data Centre, ACT
Global Switch, NSW
Westpac Data Centre, NSW
RUDATA, NSW
Dicker Data Centre, NSW
Airtrunk, NSW
National Broadband Network (NBN)
Equinix, NSW
Fibre to the Kerb (FTTP)
Taipan Network, QLD
Optus

FROM HUMBLE BEGINNINGS,
TODAY WE HAVE LOCATIONS ALL
ACROSS AUSTRALIA

**MASCOT ENGINEERING**

Australia-Wide Sales Enquiries

1300 885 295 Phone

1300 885 296 Fax

Lines open 8am to 5pm, Mon to Fri

sales@mascoteng.com.au

mascotengineering.com.au



Sydney

37 Tarlington Place
Smithfield NSW 2164



Melbourne

11 Aerolink Drive
Tullamarine VIC 3043



Brisbane

15 Ironstone Road
Berrinba QLD 4117



Perth

18 Boom Street
Gnangara WA 6077



Newcastle

18 Martin Drive
Tomago NSW 2322

Distributors
and Stockists
SA, NT, TAS & ACT



Scan to visit the
Mascot website